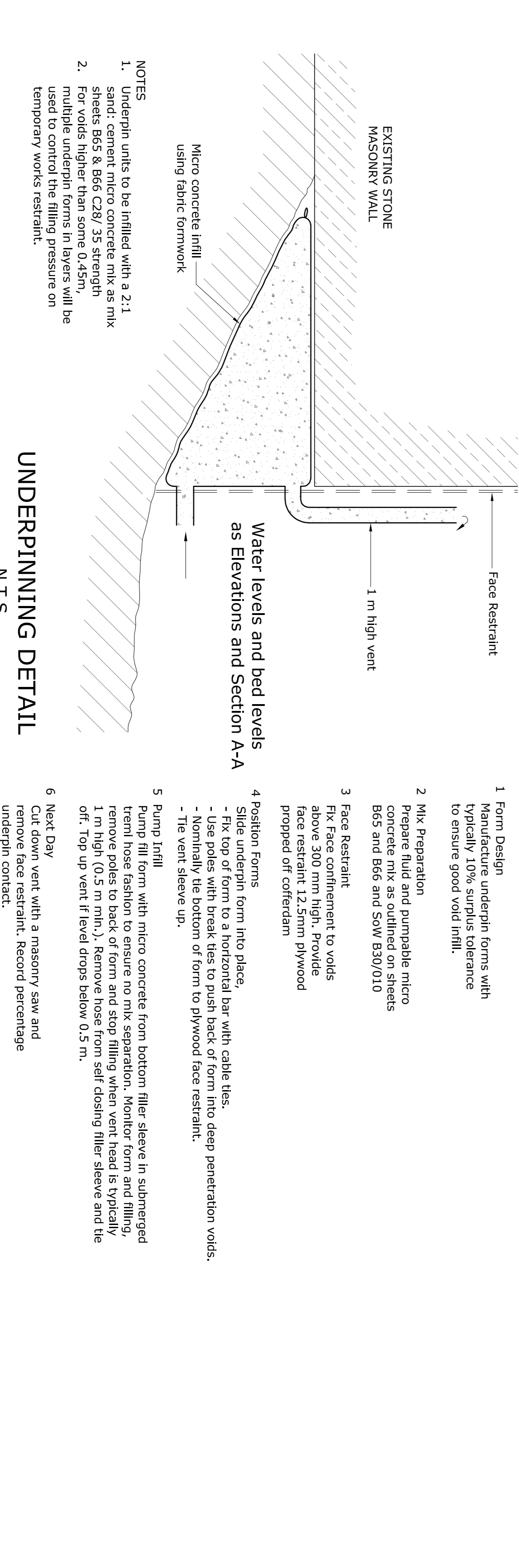
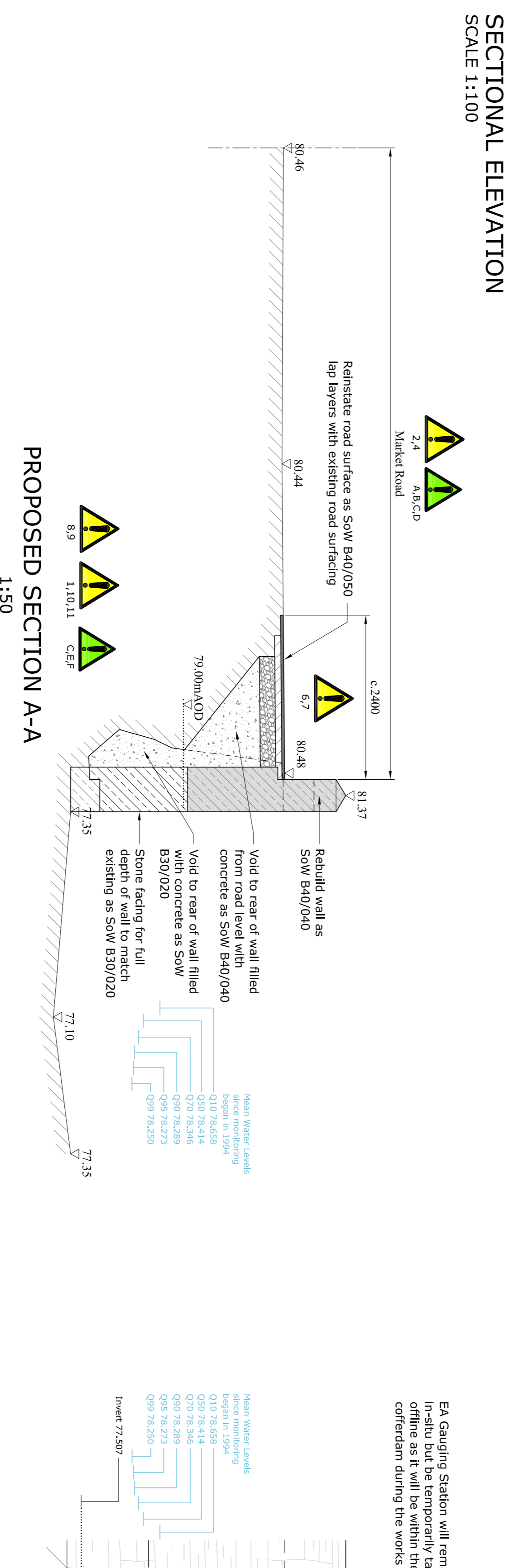
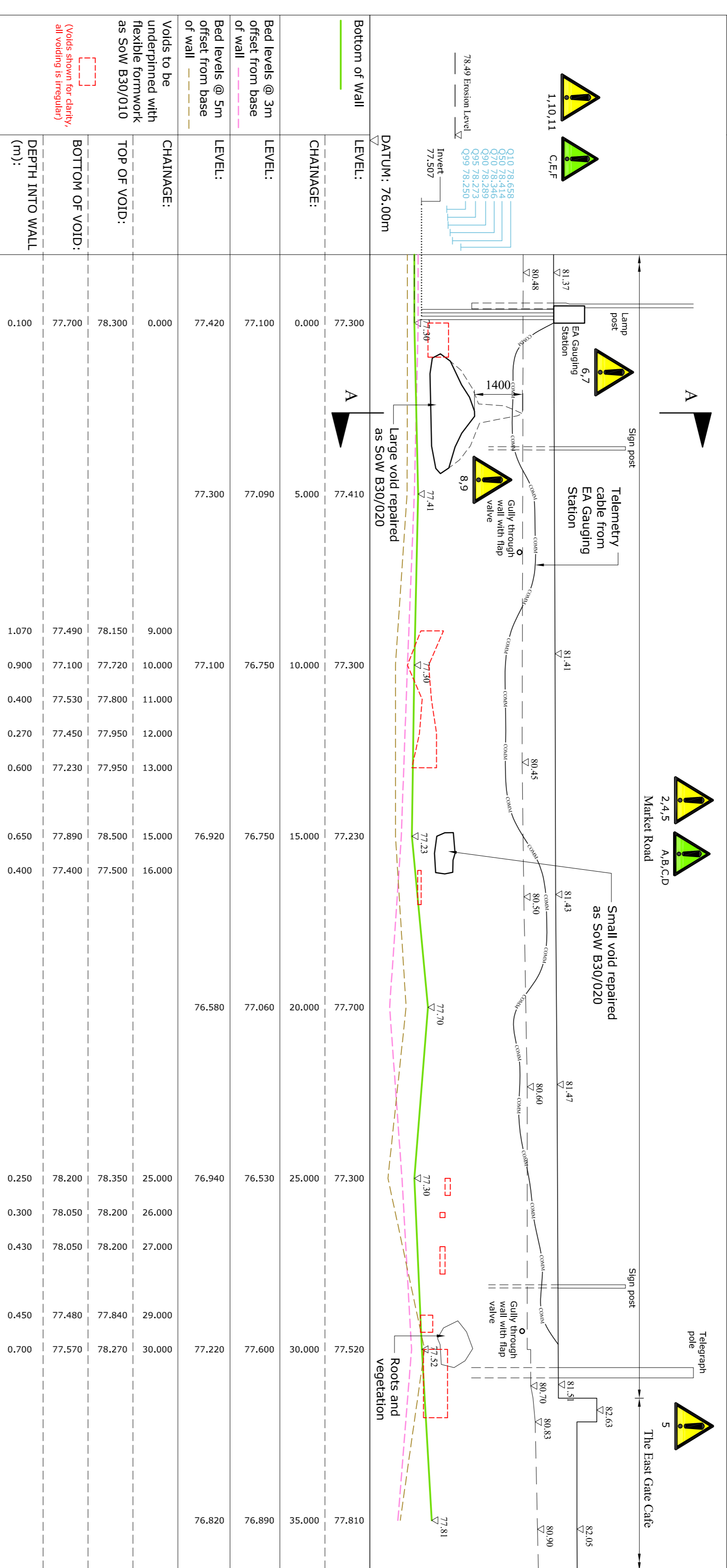


Top of Wall	LEVEL:	81.370	81.410	81.430	81.470	81.510	82.050
CHAINAGE:		-1.476	9.669	16.702	22.260	31.030	35.256
Road Level	LEVEL:	80.480	80.450	80.500	80.600	80.700	80.900
CHAINAGE:		-1.476	12.840	16.771	22.324	31.066	35.256



ENVIRONMENTAL INFORMATION

In addition to environmental hazards/risks normally associated with the nature and scope of the proposed works, note the following:

Environmental Hazards:

- A. Emissions to air.
- B. Running of plant & equipment.
- C. Vehicles driving to and from site.
- D. Construction waste and by-products.
- E. Refueling site waste.
- F. Refueling site water/motor quality.
- G. Refueling site.
- H. Plant operating over watercourse.
- I. Debris falling into watercourse.
- J. Silt becoming mobile in watercourse due to nature of the works.
- K. Concrete placed in river.
- L. Releases to land.
- M. Refueling of plant and equipment.
- N. Hydraulic hose failure/leakage.
- O. Machine/plant failure.
- P. Ecology - Flora & Fauna/Invasive species.
- Q. Damage to habitat with plant and machinery.
- R. Spread of invasive species via equipment or staff.
- S. Tree works - nesting birds.
- T. Free Root Protection Zones.
- U. Hibernation boxes.
- V. Wildlife and habitat.
- W. Disruption of species.
- X. Nesting birds.
- Y. Bats.
- Z. Fish.

It is assumed that all works will be carried out by a competent contractor working in accordance with an accepted Environmental Management Plan and, where appropriate, to approved risk assessments method statements monitored by an Environmental Clerk of Works (ECOW).

HEALTH & SAFETY INFORMATION

In addition to the safety hazards/risks normally associated with the nature and scope of the proposed works, note the following:

Construction Hazards:

1. Working in and adjacent to fast flowing deep water.
2. Working adjacent to highway.
3. Weight restriction on Abbey Bridge unknown.
4. Existing services in vicinity appear to be electrical/cables overhead as shown. Scan area of Protection prior to construction.
5. Access to properties to be maintained. Fret site fencing around working area and compound.
6. Void to wall - Do not surcharge at pool level with plant or materials.
7. Stability of excavations. Batter slopes to safe angle of repose. Protect and cover exposed banks.
8. Falling and working at height - temporary access platform/edge protection required.
9. Temporary works and cofferdam.
10. Watercourse to be protected MW PG05.
11. Flood risk in bad weather - construct flume and monitor flood warnings. Locate site in periods of warning.

Maintenance, Cleaning and Removal:
Inspections of facility, fencing etc to be completed regularly and in particular following periods of high flow and flooding.

CDM Regulations:
A construction phase health and safety plan will be required for the works.

It is assumed that all works will be carried out by a competent contractor working in accordance with an accepted Construction Phase Plan and, where appropriate, to approved risk assessments method statements.

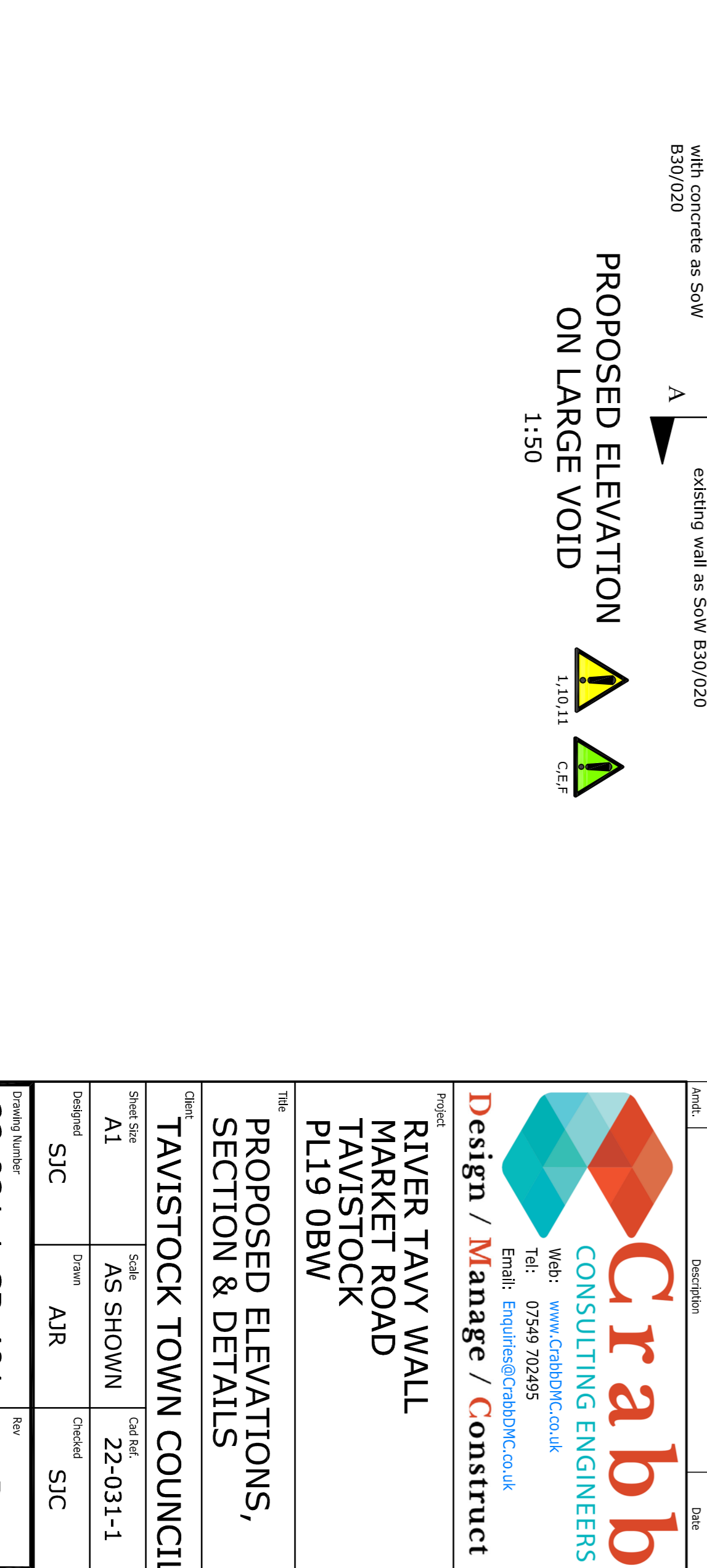
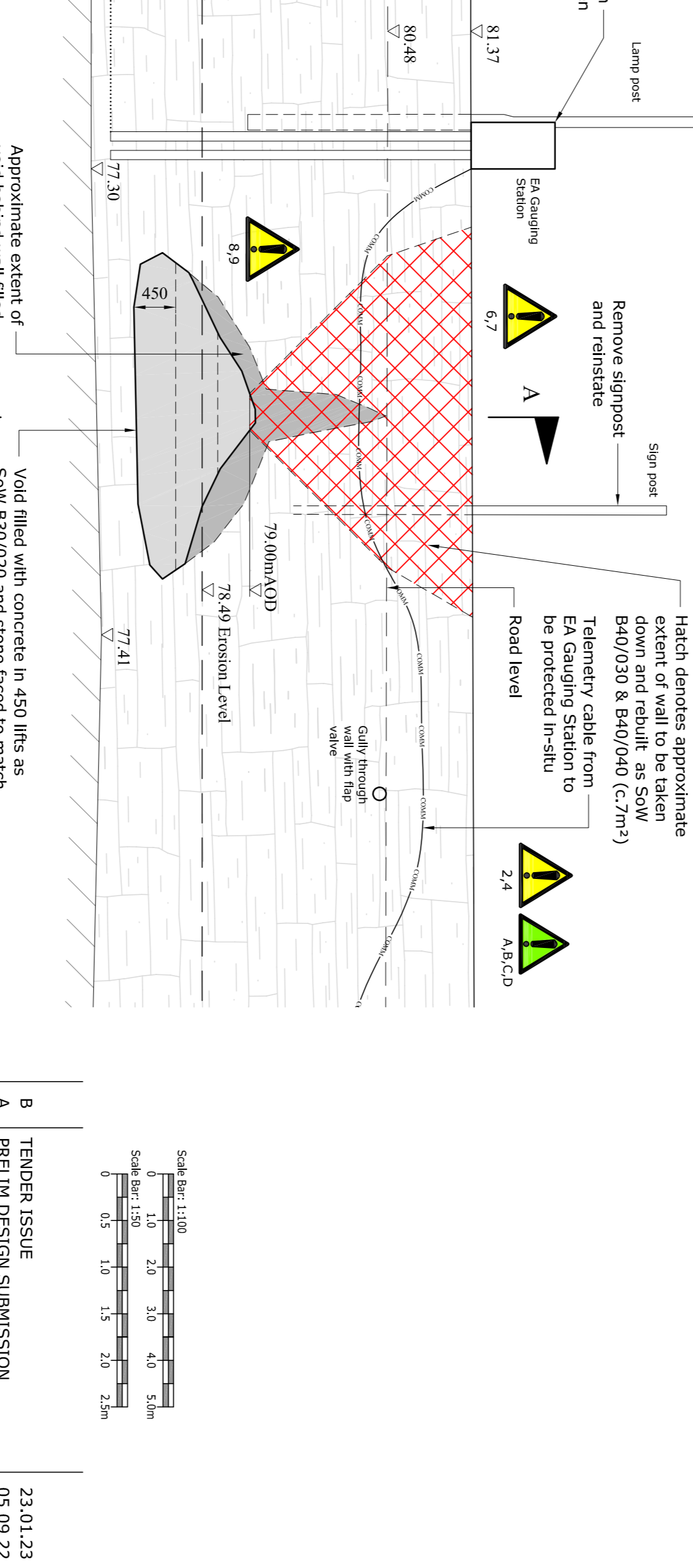
ENVIRONMENTAL INFORMATION

In addition to environmental hazards/risks normally associated with the nature and scope of the proposed works, note the following:

Environmental Hazards:

- A. Emissions to air.
- B. Running of plant & equipment.
- C. Vehicles driving to and from site.
- D. Construction waste and by-products.
- E. Refueling site waste.
- F. Refueling site water/motor quality.
- G. Refueling site.
- H. Plant operating over watercourse.
- I. Debris falling into watercourse.
- J. Silt becoming mobile in watercourse due to nature of the works.
- K. Concrete placed in river.
- L. Releases to land.
- M. Refueling of plant and equipment.
- N. Hydraulic hose failure/leakage.
- O. Machine/plant failure.
- P. Ecology - Flora & Fauna/Invasive species.
- Q. Damage to habitat with plant and machinery.
- R. Spread of invasive species via equipment or staff.
- S. Tree works - nesting birds.
- T. Free Root Protection Zones.
- U. Hibernation boxes.
- V. Wildlife and habitat.
- W. Disruption of species.
- X. Nesting birds.
- Y. Bats.
- Z. Fish.

It is assumed that all works will be carried out by a competent contractor working in accordance with an accepted Environmental Management Plan and, where appropriate, to approved risk assessments method statements monitored by an Environmental Clerk of Works (ECOW).



Crabb CONSULTING ENGINEERS
 Web: www.crabbdmc.co.uk
 Tel: 07549 702495
 Email: Enquiries@CrabbDMC.co.uk

Design / Manage / Construct

Project: RIVER TAVY WALL MARKET ROAD TAVISTOCK PL19 0BW

The PROPOSED ELEVATIONS, SECTION & DETAILS

Client: TAVISTOCK TOWN COUNCIL

Sheet No	AS SHOWN	Scale	AS SHOWN	CD Ref.	22-031-1
Designed	SJC	Drawn	AJR	Checked	SJC
Revision Number	22-031-1-CB-401	Rev			B

Scale Bar: 1:100
 0 1.0 2.0 3.0 4.0 5.0m
 Scale Bar: 1:50
 0 0.5 1.0 1.5 2.0 2.5m

Rev	Description	Date
A	TENDER ISSUE	23.01.23
B	PRELIM DESIGN SUBMISSION	05.09.22

NOTES

1. Underpin units to be infilled with a 2:1 sand: cement micro concrete mix as mix sheets B65 & B66 C28/ 35 strength.
2. For voids higher than some 0.45m, multiple underpin forms in layers will be used to control the filling pressure on temporary works restraint.

NOTES

1. Underpin units to be infilled with a 2:1 sand: cement micro concrete mix as mix sheets B65 & B66 C28/ 35 strength.
2. For voids higher than some 0.45m, multiple underpin forms in layers will be used to control the filling pressure on temporary works restraint.
3. Face Restraint
4. Position Forms
5. Pump Infill
6. Next Day