

Tavistock Pannier Market Public Realm Furniture

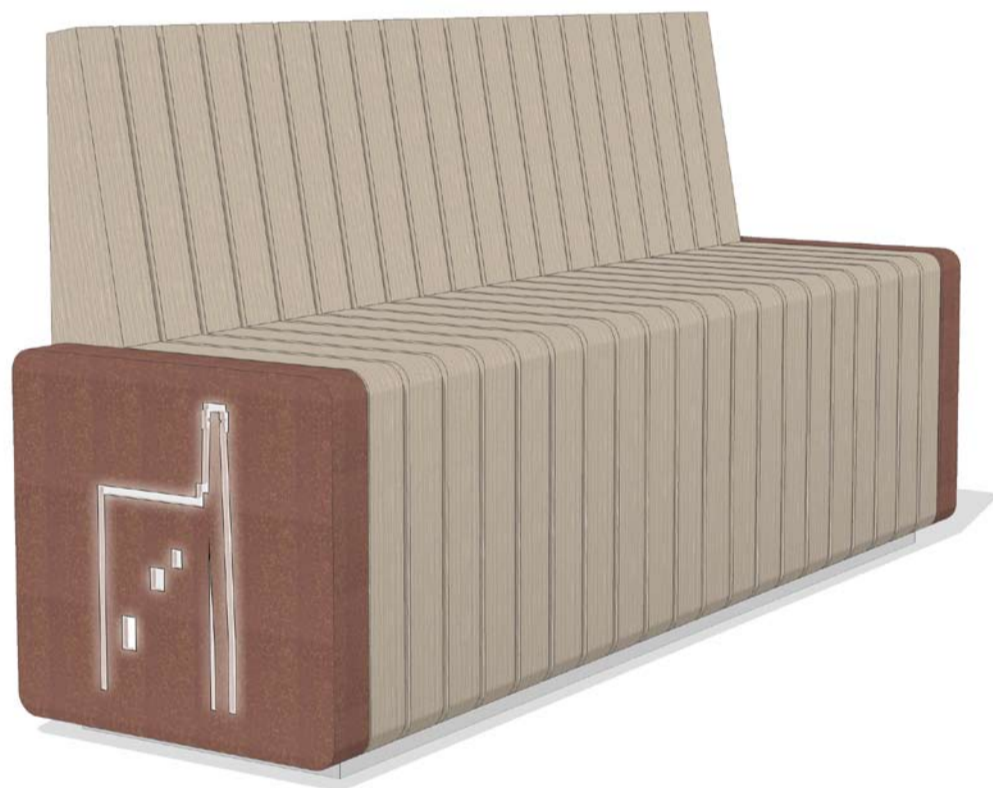
Street Furniture

A modular based street furniture range that aims to introduce natural materials into the townscape and promote well being.



Double Planter
L - 1200mm H - 500mm W - 500mm

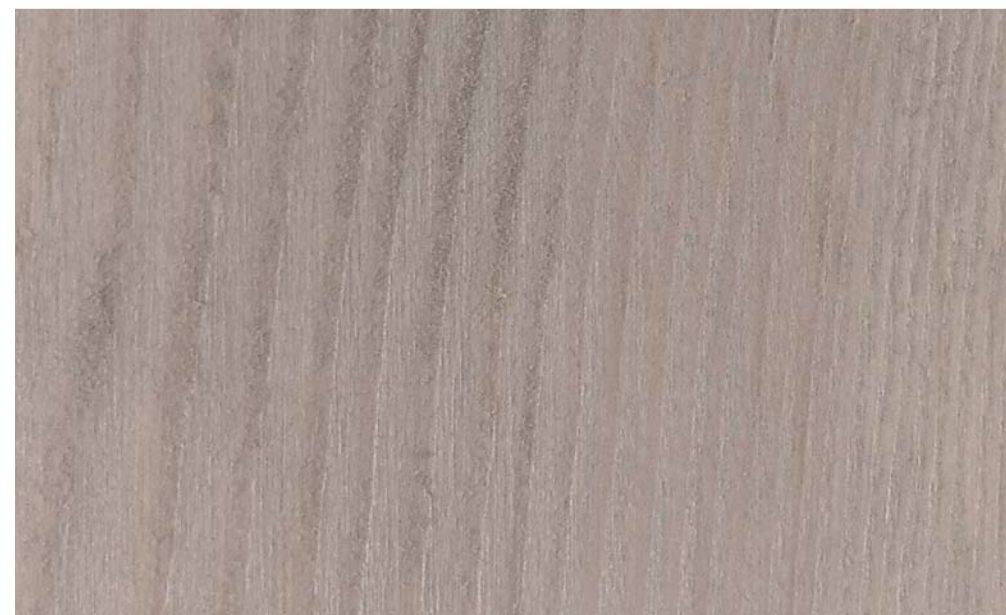
- Planter module with option to incorporate lit panels.
- Planted with evergreen shrubs and lavender, with integrated irrigation kit.



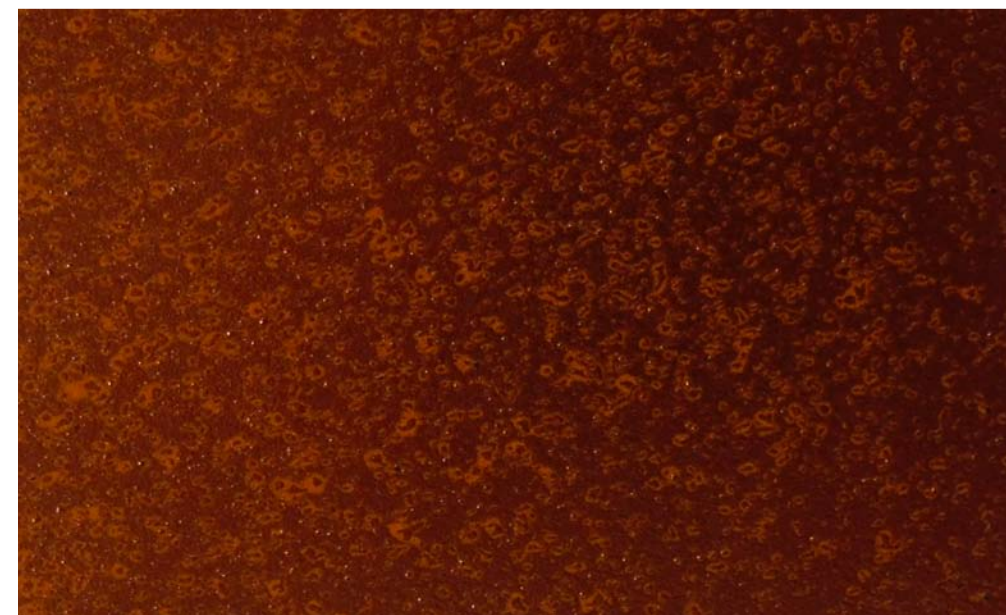
Seat Module
L - 1640mm H - 899mm W - 500mm

- Bench seat with back support.
- Metal end facia panels incorporate bespoke motif of local Wheal Betsy tin mine, referencing the mining heritage of Tavistock.

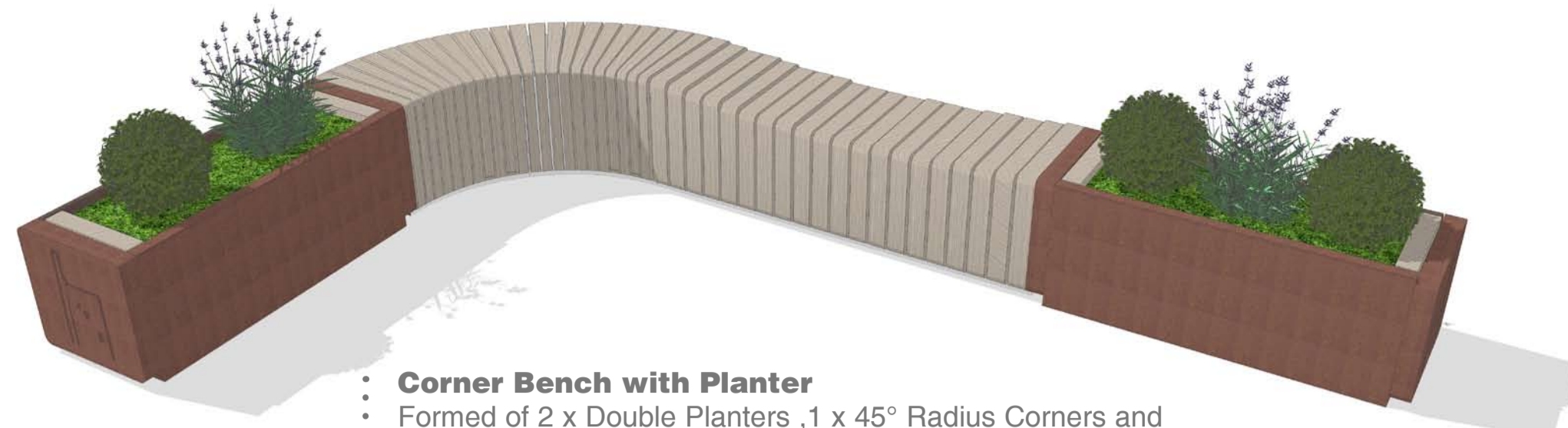
Materials



Timber
FSC Certified redwood in 'Greymist'

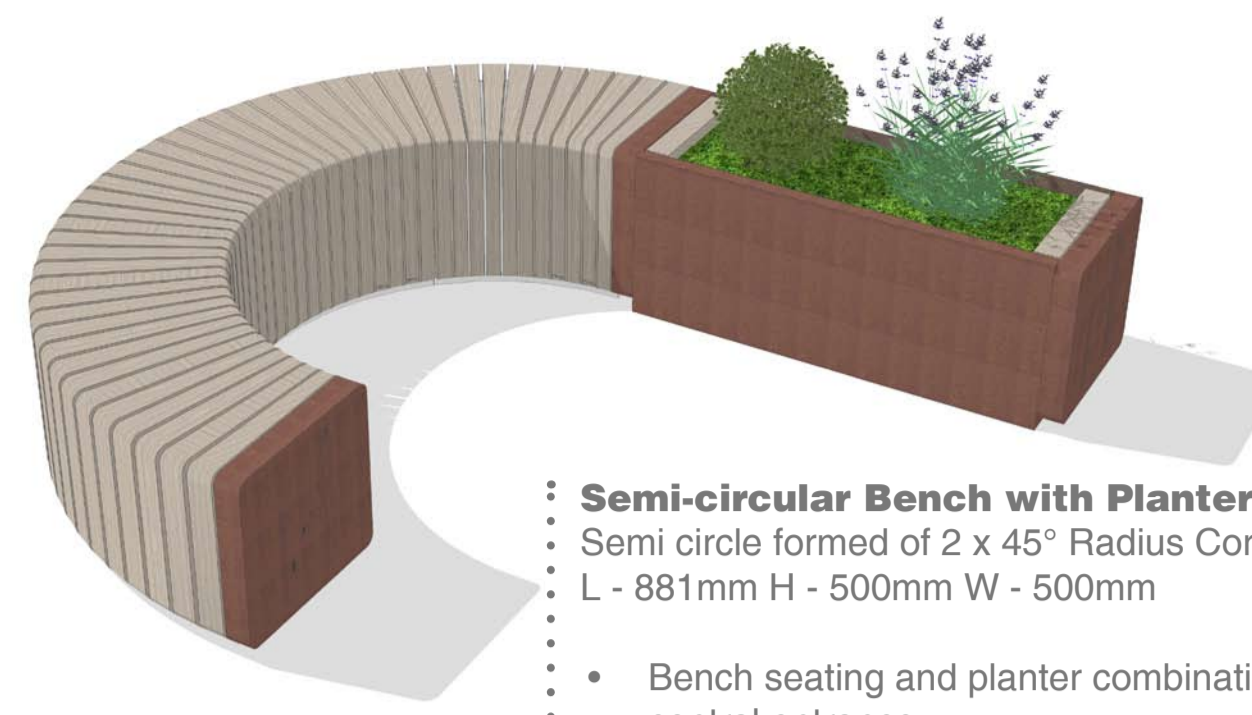


Metal
Weathered tin effect metal panels.
Ability to be back lit with bespoke motif.



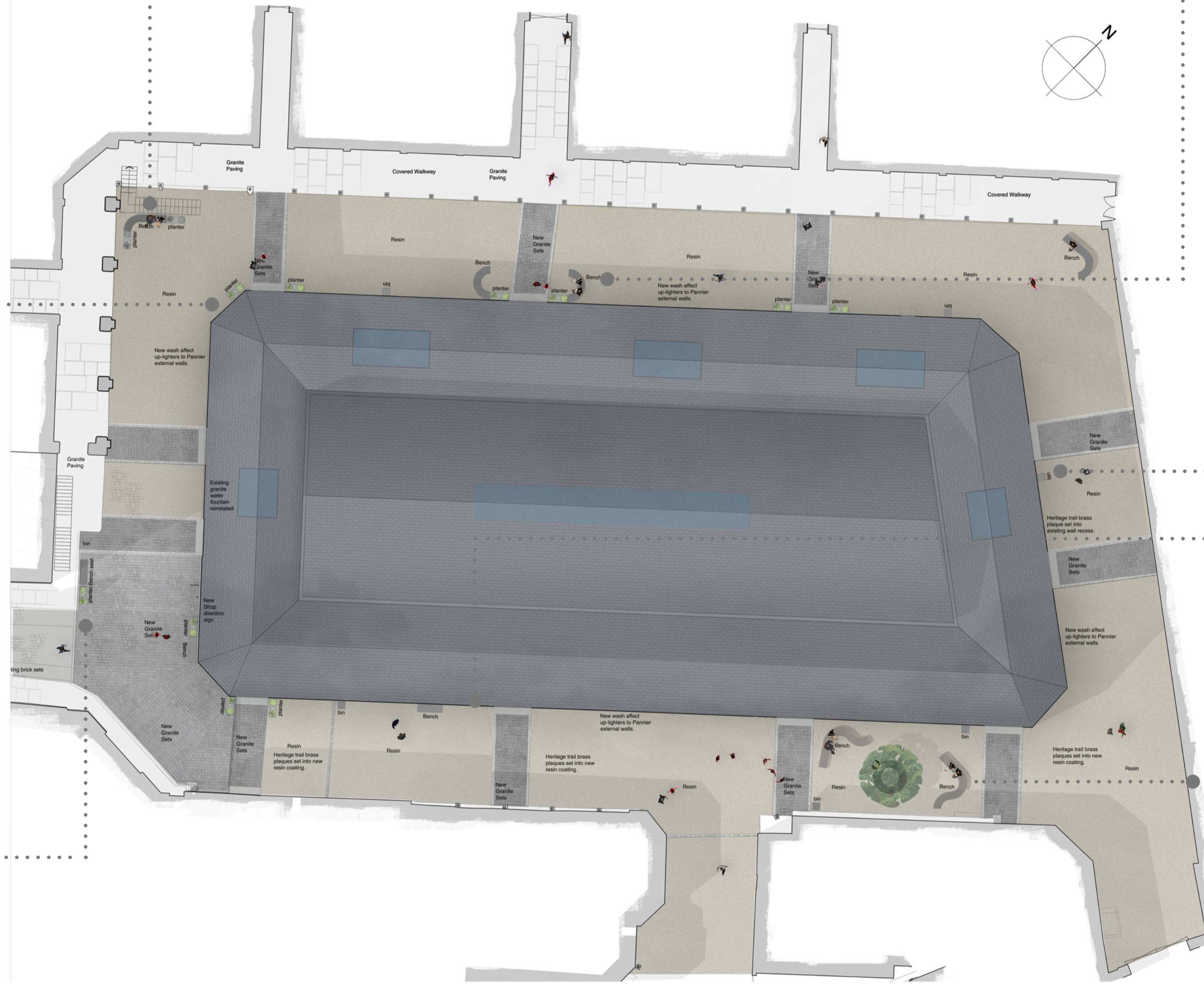
Corner Bench with Planter
Formed of 2 x Double Planters, 1 x 45° Radius Corners and 1 Concave Bench

- Modular elements used to form corner seating.
- Seating height variations consider inclusive design.



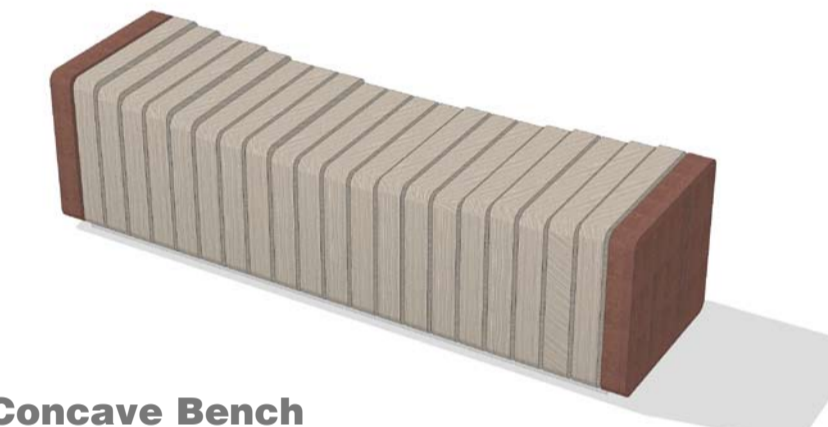
Semi-circular Bench with Planter
Semi circle formed of 2 x 45° Radius Corners
L - 881mm H - 500mm W - 500mm

- Bench seating and planter combinations to demarcate central entrance



Recycle Bin
L - 600mm H - 1040mm W - 480mm

- Incorporates ash tray and galvanised liner.
- Universal key and key included.

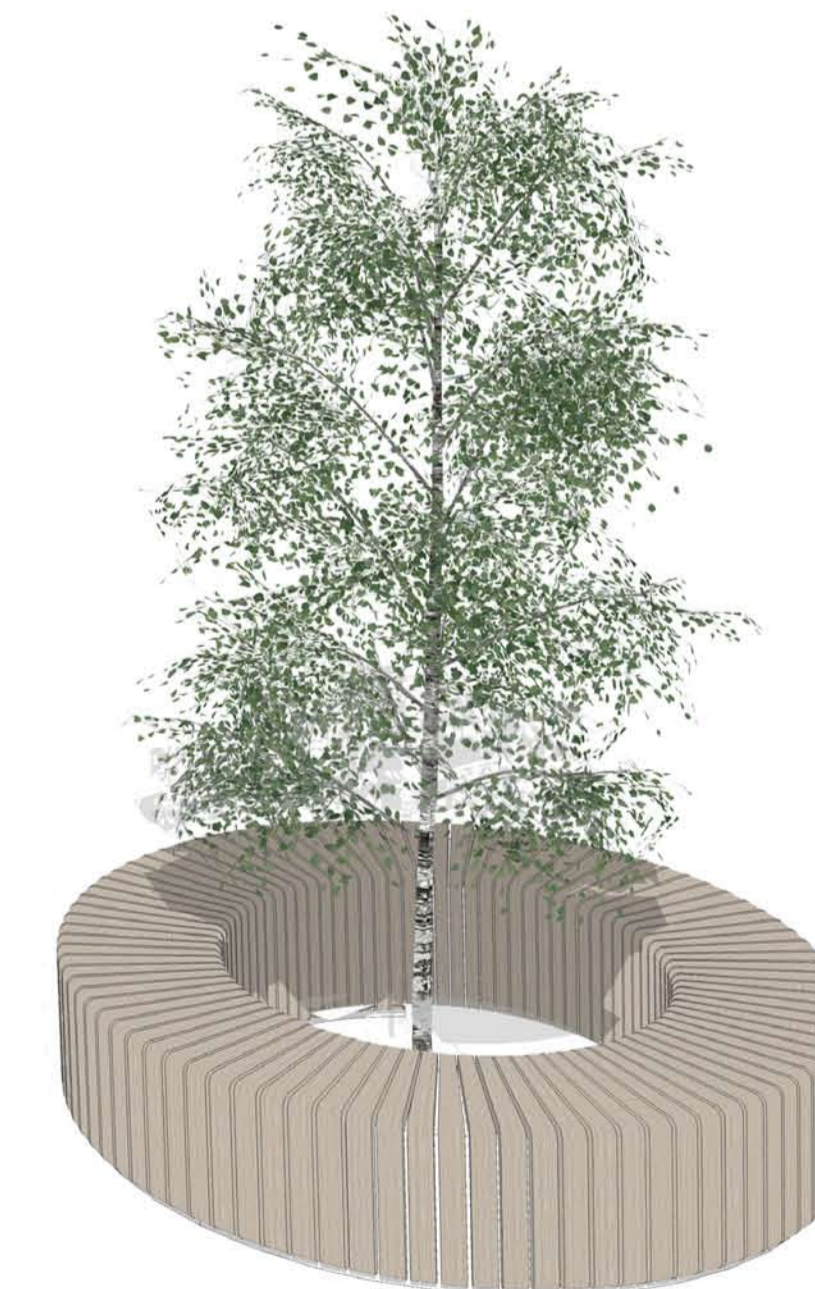


Concave Bench
L - 1640mm H - 450-500mm W - 500mm



Curved Bench Seat
Formed of 3 x 45° Radius Corners and 1 x Concave Bench

- S-Shape bench seat with bespoke motif to end panels.



Circular Bench with Planter
Semi circle formed of 4 x 45° Radius Corners
L - 881mm H - 500mm W - 500mm
Overall diameter of 2250mm

- Connivent, comfortable seating that encourages social interaction.

THIS DRAWING MUST BE READ IN CONJUNCTION WITH OTHER ARCHITECT'S, CONSULTANT'S, SUB-CONTRACTOR'S AND SPECIALIST DRAWINGS.

ALL DIMENSIONS ARE IN MILLIMETRES UNLESS STATED OTHERWISE.

ALL DIMENSIONS ARE TO BE VERIFIED ON SITE AND CONFIRMED, BY THE CONTRACTOR, BEFORE COMMENCEMENT OF CONSTRUCTION.

IF THIS DRAWING EXCEEDS THE QUANTITIES TAKEN, IN ANY WAY, THE ARCHITECTS ARE TO BE INFORMED BEFORE THE WORK IS PUT IN HAND.

Rev	Date	Revision	By	Chk
-	00.00.00	-	-	-

Notes

Text

Le Page Architects

Le Page Architects Limited
Plumer House
Tailyour Road
Crownhill
Plymouth
PL6 5DH
Tel: +44 (0)1752 849 880

Email: enquiries@lepagearchitects.com
Web: <http://www.lepagearchitects.com>

Client

Tavistock Town Council

Project Name
Tavistock Pannier Market Public Realm

Drawing
Site Plan

Scale
NTS @ A1

Drawn by	Date
IK	15/01/18
Checked by	Date
SC	15/01/18

Project No.	Drawing No	Revision
J16.065	AB10	-